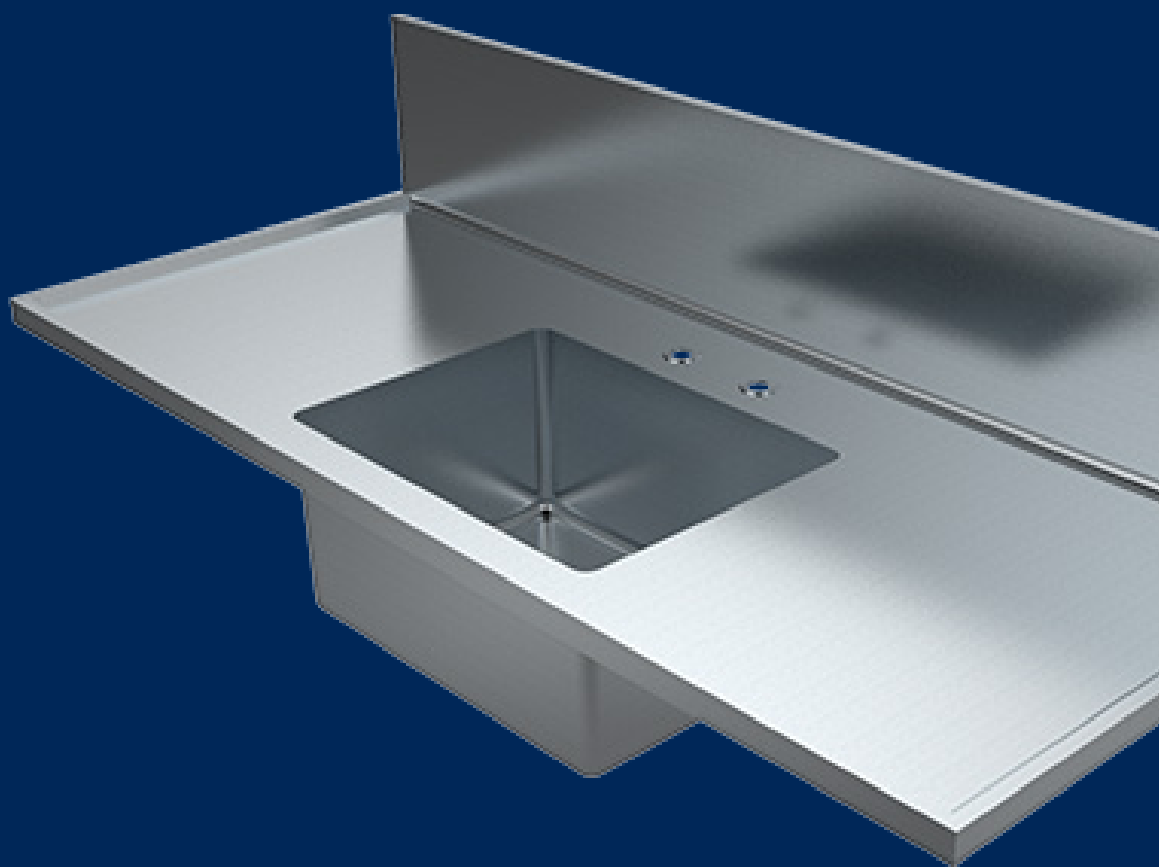


PROJECT GUIDE

BRITEX

HEALTH SCIENCE



* CLICK ON IMAGE FOR ONLINE PAGE *

HEALTH SCIENCE

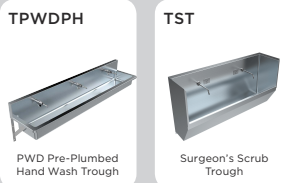
Hospitals/Laboratories/Aged Care/Medical Centres



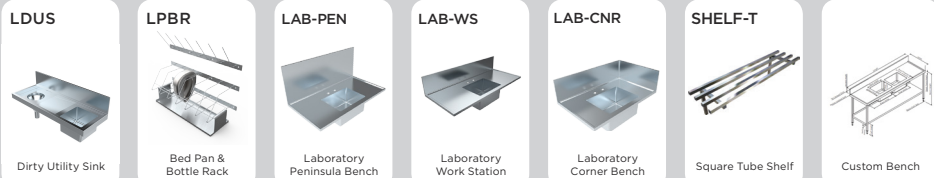
COMMERCIAL SINKS



TROUGHS



BENCHING



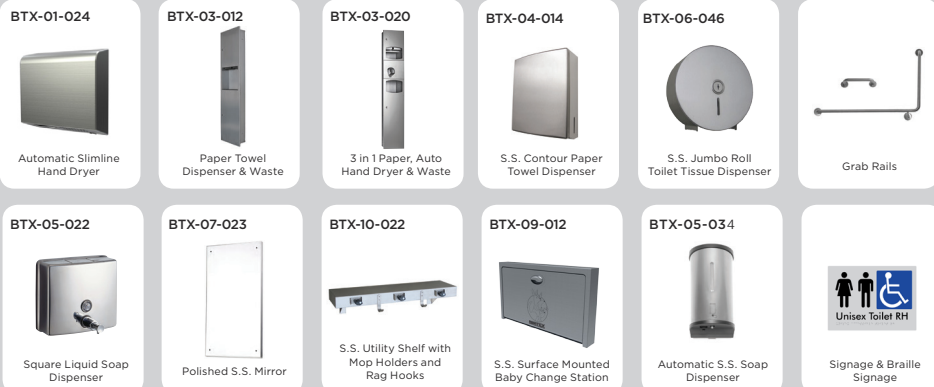
SHOWERS & BATHS



FLUSHING



WASHROOM ACCESSORIES



* CLICK ON IMAGE FOR ONLINE PAGE *

HEALTH SCIENCE

Hospitals/Laboratories/Aged Care/Medical Centres



URINALS



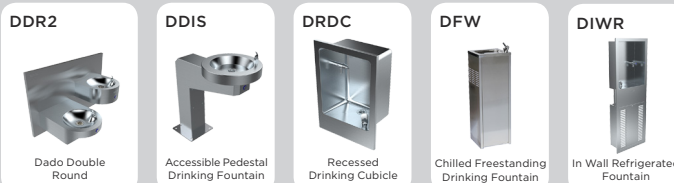
TOILETS



HAND BASINS



FOUNTAINS



TAPWARE



TANKS & DRAINAGE



MELBOURNE
Britex Place, Mirra Crt
Bundoora VIC 3083
t (03) 9466 9000
e vic@britex.com.au

SYDNEY
16 Northumberland Drv
Taren Point NSW 2229
t (02) 9531 2100
e nsw@britex.com.au

PERTH
Unit 1/8 Principal Link
Malaga WA 6090
t (08) 9249 5464
e wa@britex.com.au

BRISBANE
19 Manilla St
East Brisbane QLD 4169
t (07) 3363 2400
e qld@britex.com.au

ADELAIDE
The Britex Group
SA State Office
t 1300 764 744
e sa@britex.com.au

britex.com.au | info@britex.com.au | A.B.N 83 004 309 737



MELBOURNE
Britex Place, Mirra Crt
Bundoora VIC 3083
t (03) 9466 9000
e vic@britex.com.au

SYDNEY
16 Northumberland Drv
Taren Point NSW 2229
t (02) 9531 2100
e nsw@britex.com.au

PERTH
Unit 1/8 Principal Link
Malaga WA 6090
t (08) 9249 5464
e wa@britex.com.au

BRISBANE
19 Manilla St
East Brisbane QLD 4169
t (07) 3363 2400
e qld@britex.com.au

ADELAIDE
The Britex Group
SA State Office
t 1300 764 744
e sa@britex.com.au

britex.com.au | info@britex.com.au | A.B.N 83 004 309 737