

**CALL US
TODAY**
for your free
consultation

CONSULTATION SERVICE FOR SPECIFIERS

BRITEX specialise in assisting specifiers with specification of custom-made stainless steel fixtures. With 70+ years of experience in custom stainless fabrication, BRITEX can provide a wealth of technical advice on the best way to design and document benches, sinks and shelves that are cost-effective and ideally suited to specific project requirements. BRITEX can also provide standard CAD drawings and documentation tools that make this task quick, easy and accurate.

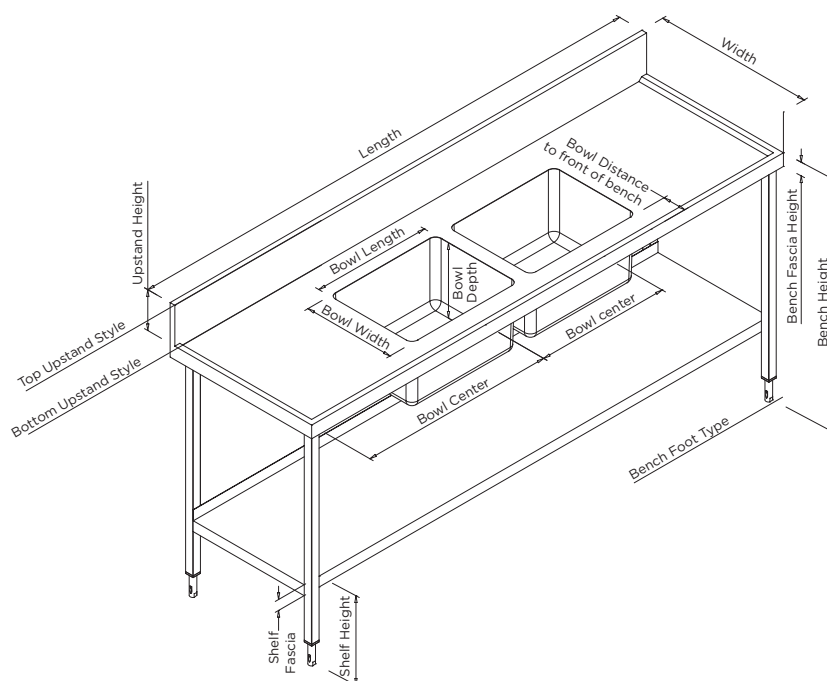
about

Custom stainless steel benching incorporates a significant number of variables that combine to provide a fixture that is ideally suited to individual project applications. For the purposes of specifying fixtures for tender documents and quotation requests it is crucial that each one of these important variables are adequately detailed as they are likely to have a significant impact on both the cost and suitability of the fixture when completed. To assist with the task of specifying and detailing custom stainless steel benches, sinks and shelves, BRITEX has developed the following step-by-step specification procedure that ensures all variables are considered by the specifier and detailed in the specification document accordingly.

how to
code

HOW TO SPECIFY: Benching

1. Provide the **Length, Width and Height** of the bench
e.g. L 1200mm x W 600mm x H 900mm
2. Select the **Grade of Stainless Steel 304 or 316**, and the **Thickness**
(1.2mm standard, 1.5mm and 2mm also available)
3. Provide the **Additional Features** that you would like your bench to include such as **fascia style, upstand style, over and under shelving, substrate, bowl size and leg options**
4. Add **Comments** e.g. 3 x 30mm tap holes spaced evenly at the top of each basin



Typical Isometric Drawing

VISIT BRITEX.COM.AU TO DOWNLOAD BIM FILES, CAD DRAWINGS AND THE MOST CURRENT PRODUCT LITERATURE.

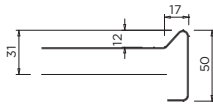
BENCHING: HOW TO SPECIFY

ADDITIONAL FEATURES

STEP 1 Choose the bench fascia style

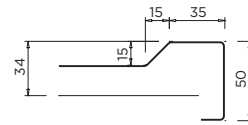
CODE F1

Minimum 35 fascia with 18mm substrate



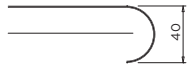
CODE F8

Minimum 35 fascia with 18mm substrate



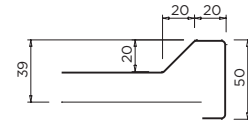
CODE F2

Bull Nose



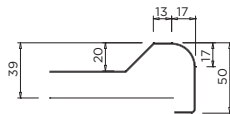
CODE F9

Minimum 40 fascia with 18mm substrate



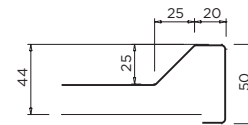
CODE F3

Minimum 40 fascia with 18mm substrate



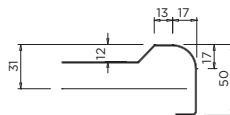
CODE F10

Minimum 45 fascia with 18mm substrate



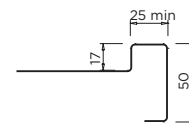
CODE F4

Minimum 35 fascia with 18mm substrate



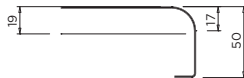
CODE F11

Box Bead Minimum



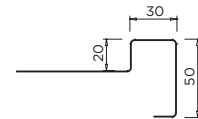
CODE F5

Minimum 25 fascia with 18mm substrate



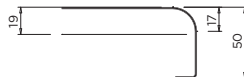
CODE F12

Box Bead Typical



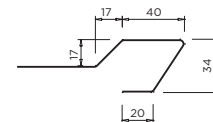
CODE F6

Minimum 35 fascia with 18mm substrate



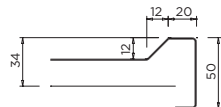
CODE F13

Minimum 40 fascia with 18mm substrate



CODE F7

Standard wet bead
Minimum 35 fascia with 18mm substrate



CODE F14

Dry Bench Typical



STEP 2 Choose the bonding style

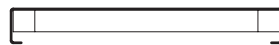
CODE B1

Melamine Lined (Sealed) Timber



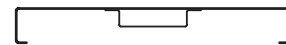
CODE B2

Stainless Steel Tube



CODE B3

Top Hat Stiffener

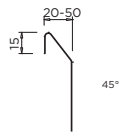


PLEASE VISIT BRITEX.COM.AU FOR THE MOST CURRENT DATA SHEETS, CAD DRAWINGS AND REVIT FILES.

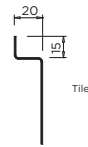
ADDITIONAL FEATURES

STEP 3 Choose the top of upstand style

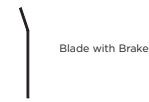
CODE T-UP1



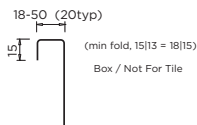
CODE T-UP3



CODE T-UP5



CODE T-UP2



CODE T-UP4



STEP 4 Choose the bottom of upstand style

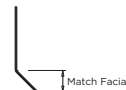
CODE B-UP1



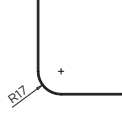
CODE B-UP3



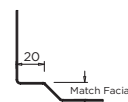
CODE B-UP6



CODE B-UP2



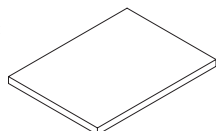
CODE B-UP4



STEP 5 Choose the undershelfing style (if applicable)

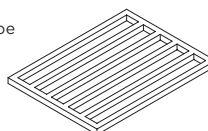
CODE UN1

Sheet



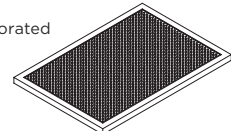
CODE UN2

Tube



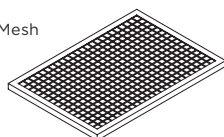
CODE UN3

Perforated



CODE UN4

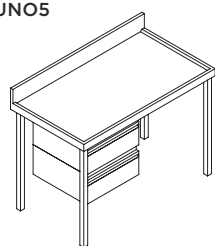
Wire Mesh



STEP 6 Choose additional components (if applicable)

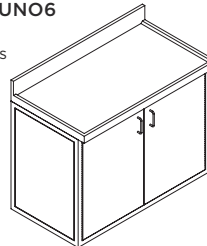
CODE UNO5

Drawer



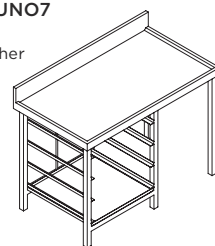
CODE UNO6

Cabinets



CODE UNO7

Dishwasher Rack



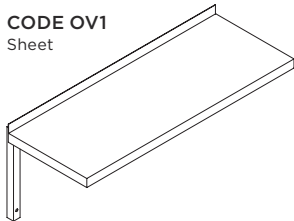
VISIT BRITEX.COM.AU TO DOWNLOAD BIM FILES, CAD DRAWINGS AND THE MOST CURRENT PRODUCT LITERATURE.

BENCHING: HOW TO SPECIFY

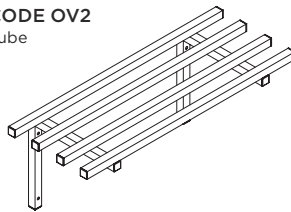
ADDITIONAL FEATURES

STEP 7 Choose the **overshelves** style (if applicable)

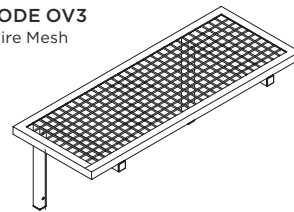
CODE OV1
Sheet



CODE OV2
Tube



CODE OV3
Wire Mesh



STEP 8 Choose the **bowl** size

bowl code	bowl sizes (L x W x D)
REB 1	400 x 400 x 300mm
REB 2	450 x 450 x 300mm
REB 3	450 x 350 x 250mm
REB 4	500 x 500 x 300mm
REB 5	600 x 450 x 300mm
REB 6	380 x 330 x 150mm
Custom	L x W x D

All bowls are supplied with a 50mm waste outlet.

STEP 9 Choose the **leg** options

— number of legs

- ☐ front **and** back legs or
☐ front legs only

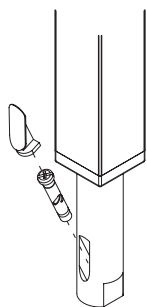
(note: if front legs only is selected it is understood that the builder will be required to provide noggins at your instruction)

☐ round legs or

☐ square legs

• 32mm square hollow section as standard

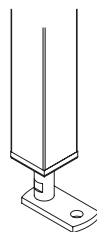
STEP 10 Choose the **foot** options



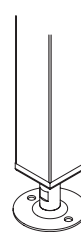
A. Britex High Impact Nylon Adjustable Foot

With over 40mm adjustability this unique foot is moulded from highly durable nylon that has great resistance to impact and heavy loading.

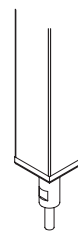
Available for 32mm square tube only



B. Lug Foot



C. Disc Foot



D. Pin Foot

Available in 25mm, 32mm & 38mm tube

CHECKLIST

- | | |
|---|--|
| <input type="checkbox"/> 1 fascia style | <input type="checkbox"/> 6 additional components (if applicable) |
| <input type="checkbox"/> 2 bonding style | <input type="checkbox"/> 7 overshelves style (if applicable) |
| <input type="checkbox"/> 3 top upstand | <input type="checkbox"/> 8 bowl size |
| <input type="checkbox"/> 4 bottom upstand | <input type="checkbox"/> 9 leg options |
| <input type="checkbox"/> 5 undershelves style (if applicable) | <input type="checkbox"/> 10 foot options |

VISIT BRITEX.COM.AU TO DOWNLOAD BIM FILES, CAD DRAWINGS AND THE MOST CURRENT PRODUCT LITERATURE.